

Broken River Basin

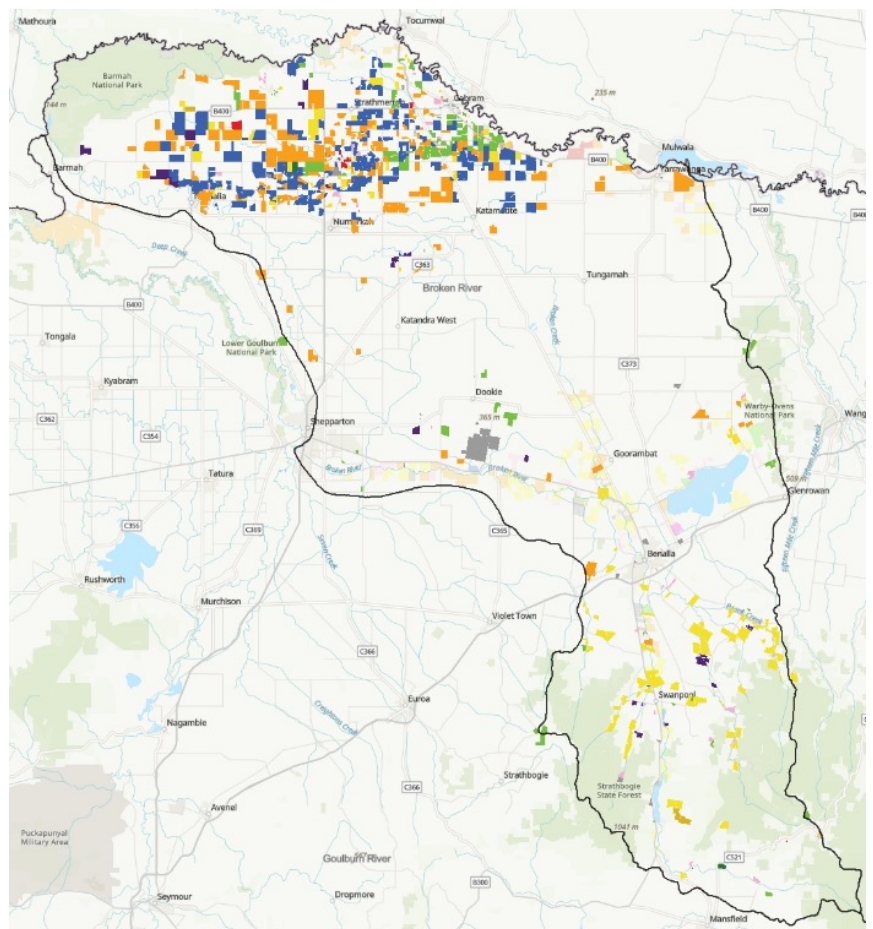
Unregulated and Groundwater Diversions 2023/24

The Broken River basin spans from Mansfield in the south to the Murray River and Barmah National Park in the north, covering 772,386 ha. The main tributaries are the Broken River and the Broken Creek, which diverges from the Broken River near Caseys Weir. There is one storage, Lake Nillahcootie, which enables downstream flows to be regulated to meet the needs of downstream users.

Throughout the catchment, there are landowners that divert water from the unregulated sections of the rivers and streams and from the groundwater system.

As part of the land and water use mapping project, assessment of these unregulated water users was undertaken to determine the amount of water used, what industry the water was used in and the number of Take and Use Licences within the catchment. Future data collection will provide an opportunity to then analyse changes in these criteria and inform future decision making across the basin for both land use and water use as well as industry types. The industry types are consistent with the Regulated Diversion project and the GMID project.

FIGURE 1: BROKEN RIVER BASIN



INDUSTRY TYPES:

- 
Cropping
- 
Dairy (Combined)
- 
Energy
- 
Glasshouse Plant / Vegetable
- 
Horses
- 
Horticulture Annual
- 
Horticulture Perennial
- 
Intensive Animals
- 
Livestock Non Dairy
- 
Rural Lifestyle/ Residential
- 
Other
- 
Not Irrigated

Broken River Basin Results 2023/24

The results of the inaugural data collection provide an excellent basis to build on into the future. For the Broken River basin, there were 1,004 Take and Use Licences covering 89,506 ha, where just over 14 gigalitres (GL) of water was used. Further details are provided in Table 1.

TABLE 1: SUMMARY OF AREA, WATER USE AND TAKE AND USE LICENCES

BROKEN RIVER BASIN LAND USE	AREA (ha)	WATER USAGE (ML)	TAKE AND USE LICENCES
Cropping	25,752	3,402	221
Dairy (Combined)	31,252	6,123	293
Energy	—	—	—
Glasshouse Plant/Vegetable Production	458	130	4
Horses	443	32	3
Horticulture – Annual	631	719	7
Horticulture – Perennial	9,376	1,072	118
Intensive Animals	1,470	83	13
Livestock – Non Dairy	13,444	1,773	147
Rural Lifestyle/Residential	1,810	516	130
Other	4,741	143	61
Not irrigated	128	15	7
TOTAL	89,506	14,008	1,004

Please note: Licence area represents the parcels of land / title to which the licenced is attached and not the irrigation footprint.

Area (ha)

The total area with a Take and Use Licence for the Unregulated diversions and Groundwater users in the Broken River basin was almost 90,000 ha, with Dairy (Combined) and Cropping representing the largest areas at 31,252 ha and 25,752 ha respectively which represents 63% of the Take and Use Licence area. The total licence area represents the parcels of land/ title to which the licenced is attached and not the irrigation footprint.

Water Use (ML)

The total water use for the Unregulated diversions and groundwater users in the Broken River basin was just over 14 GL, with Dairy and Cropping enterprises using most of the water at 9.5 GL, representing 68% of the total water used.

Take and Use Licences

The total number of Take and Use Licences for Unregulated diversions and Groundwater users was 1,004. Dairy (Combined) and Cropping enterprises held the highest number of licences at 293 and 221 respectively and represented 51% of Take and Use Licence holders.